

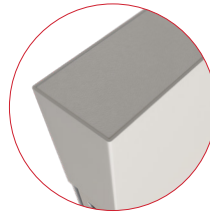
# HOLLOW METAL DOORS AND FRAMES



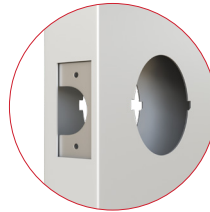
## Architectural Series - Hollow Metal Doors

The Architectural Series is designed to meet project specifications that call for a high end metal door designed to be durable, dependable, and easy to install.

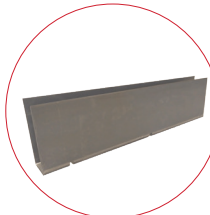
- Standard Architectural Series Doors come left or right handed, with beveled edge and lock seam design to provide the end user with a cleaner finish and more attractive product.
- Also standard is the polystyrene core, and standard 18-gauge, A60 galvanized steel.
- Architectural Series doors come with a 90 minute mylar label and are in stock in a variety of manufactures locations.
- Many available options, including seamless edge, polyurethane core, 16-gage, and much more.



- Installed, Flush Top Cap



- Standard Lock Preps are 14 Gauge Steel



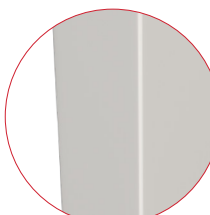
- 14 Ga. Closer Reinforcement



- 7-Gauge Steel Hinge Reinforcement



- Standard Edge, lockseam design

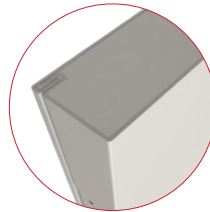


- Optional Seamless Edge

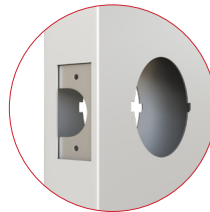
## Commercial Series – Hollow Metal Doors

Available in a broad range of sizes and hardware preparations, USA Commercial Series metal doors are manufactured with 18-gauge A60 Galvannealed steel.

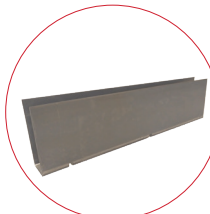
- Commercial Series Doors feature a visible lockseam edge design. The Top and Bottom channels are inverted with a factory applied flush top cap.
- Our polystyrene insulated core provides superior performance for both interior and exterior applications.
- Standard Commercial Series doors are non-handed, with square edge design to allow for inventory flexibility.
- Each door comes standard with a 90 minute mylar label.



- Installed, Flush Top Cap



- Standard Lock Preps are 14 Gauge Steel



- 14 Ga. Closer Reinforcement



- 7-Gauge Steel Non-Handed Hinge Reinforcement



- Standard edge, lockseam design

# Economy Series - Hollow Metal Doors

## Honeycomb Core

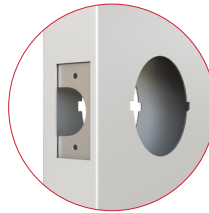
---

The USA Economy Series door provides the user with a cost-effective solution without sacrificing the integrity of the door.

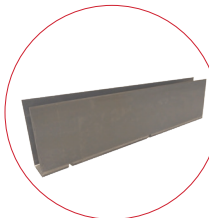
- The Economy Doors have a durable and efficient honeycomb core.
- Economy Series Doors are available in a variety of manufacturers locations.
- Each door comes standard with a 90 minute mylar label.



- Top and Bottom has Inverted Continuous Channel



- Standard Lock Preps are 14 Gauge Steel



- 14 Ga. Closer Reinforcement



- 7-Gauge Steel Non-Handed Hinge Reinforcement



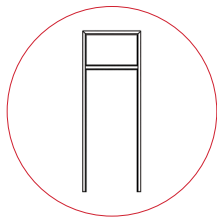
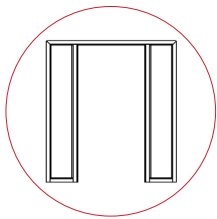
- Standard Edge, Lockseam Design

# USA Custom Hollow Metal Frames

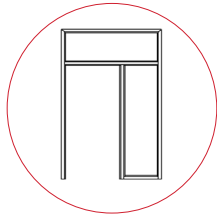
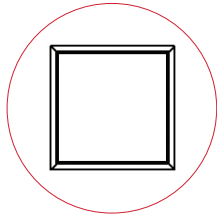
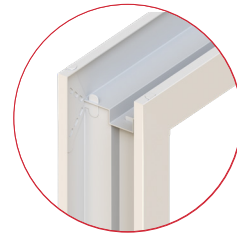
## Masonry Series / Drywall Series

### PRODUCT SPECIFICATIONS

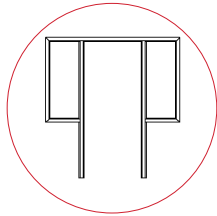
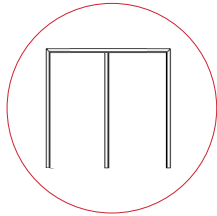
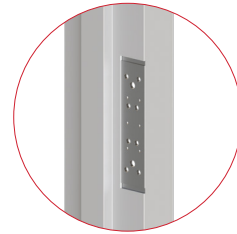
<b>CONSTRUCTION</b>	<b>Material</b>	16-Gauge A60 Galvanneal Steel
	<b>Label Capabilities</b>	Stock Frames come standard with an embossed label. Custom and Stock frames can be labelled to Intertek guidelines
	<b>Hinge jamb</b>	Prepped for 4 -1/2" x 4-1/2" hinges; 7-Gauge convertible standard weight (0.134")
	<b>Strike Jamb</b>	Prepped for ANSI-A 115.1 - 1 1/4" x 4 7/8" ASA strike; prepared for 3 silencers
	<b>Anchors</b>	Welded floor anchors are standard. Other anchor types available.
	<b>Machining</b>	Machining preparation per hardware manufacturer's template. Some limitations apply
	<b>Factory finish</b>	Light Gray Water Based Primer



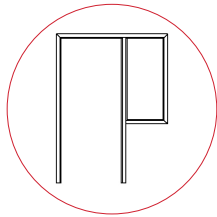
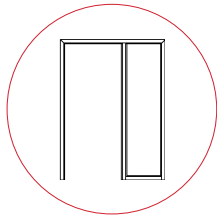
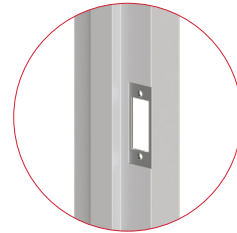
5 TAB - KD Corner



7 Gauge Hinge Reinforcement



4 7/8 ASA STRIKE



### CUSTOM FRAME & ELEVATION PROFILES

Custom elevation and 14 gauge frame are also available.

#### Included Profiles



#### Double Egress Profiles





## USA Wood Door

### PRODUCTS & SERVICES

If your project calls for hollow metal, you've come to the right place. Our offering now includes a full complement of metal doors and frames that meet the requirements of virtually any opening.

Contact your USA Wood Door Representative to learn more about our quick ship capabilities.

MIDWEST (HOWELL, MI) CUSTOMER SERVICE

TOLL FREE: **800-367-3293**

ORDERS **MIDWESTSALES@USAWOODDOOR.COM**

QUOTES **MIDWESTQUOTES@USAWOODDOOR.COM**



[usawooddoor.com](http://usawooddoor.com)

©2020 USA Wood Door

USAWD 21003

**⚠️ WARNING:** This product can expose you to chemicals including wood dust, which is known to the State of California to cause cancer. For more information, go to [www.P65Warnings.ca.gov](http://www.P65Warnings.ca.gov)